

enshift<sup>⚡</sup>

# References




Proven energy transformation projects across real estate portfolios, agriculture and commercial properties.





## Swiss Post, logistics center



REFERENCE 01

-  Industry
-  Photovoltaic system
-  Battery energy storage system (BESS)



## Paul Scherrer Institute




REFERENCE 02

-  Institutional
-  Photovoltaic system



## Residential, Multi-family

REFERENCE 03

-  Portfolio
-  Photovoltaic system
-  Heating system



UNTERVAZ, SWITZERLAND

# Swiss Post, logistics center

An expansion of Swiss Post's existing solar infrastructure, turns façades and site perimeters into productive energy assets, supported by large-scale storage and intelligent energy management.



**75'200 kg**  
CO<sub>2</sub> REDUCTION P.A.



**439 kWp**  
INSTALLED SOLAR CAPACITY



**21 stations**  
EV CHARGING PLANNED

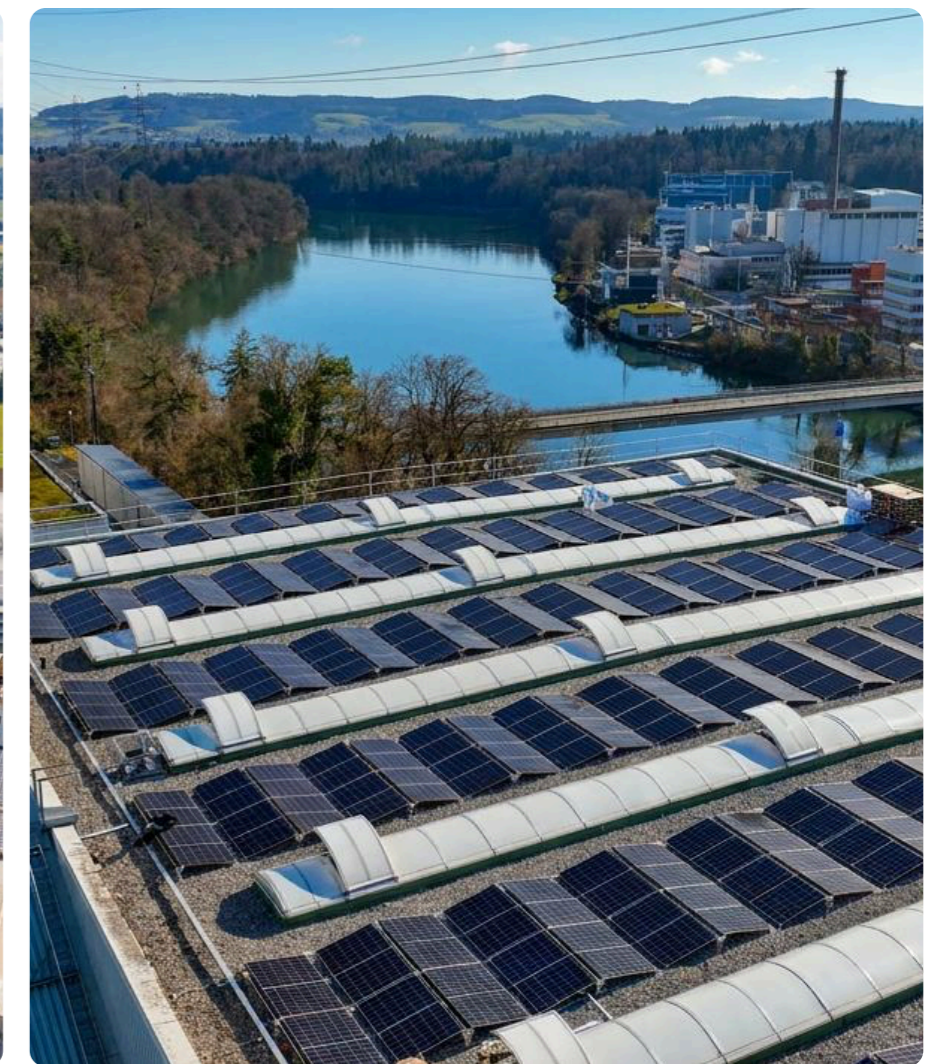
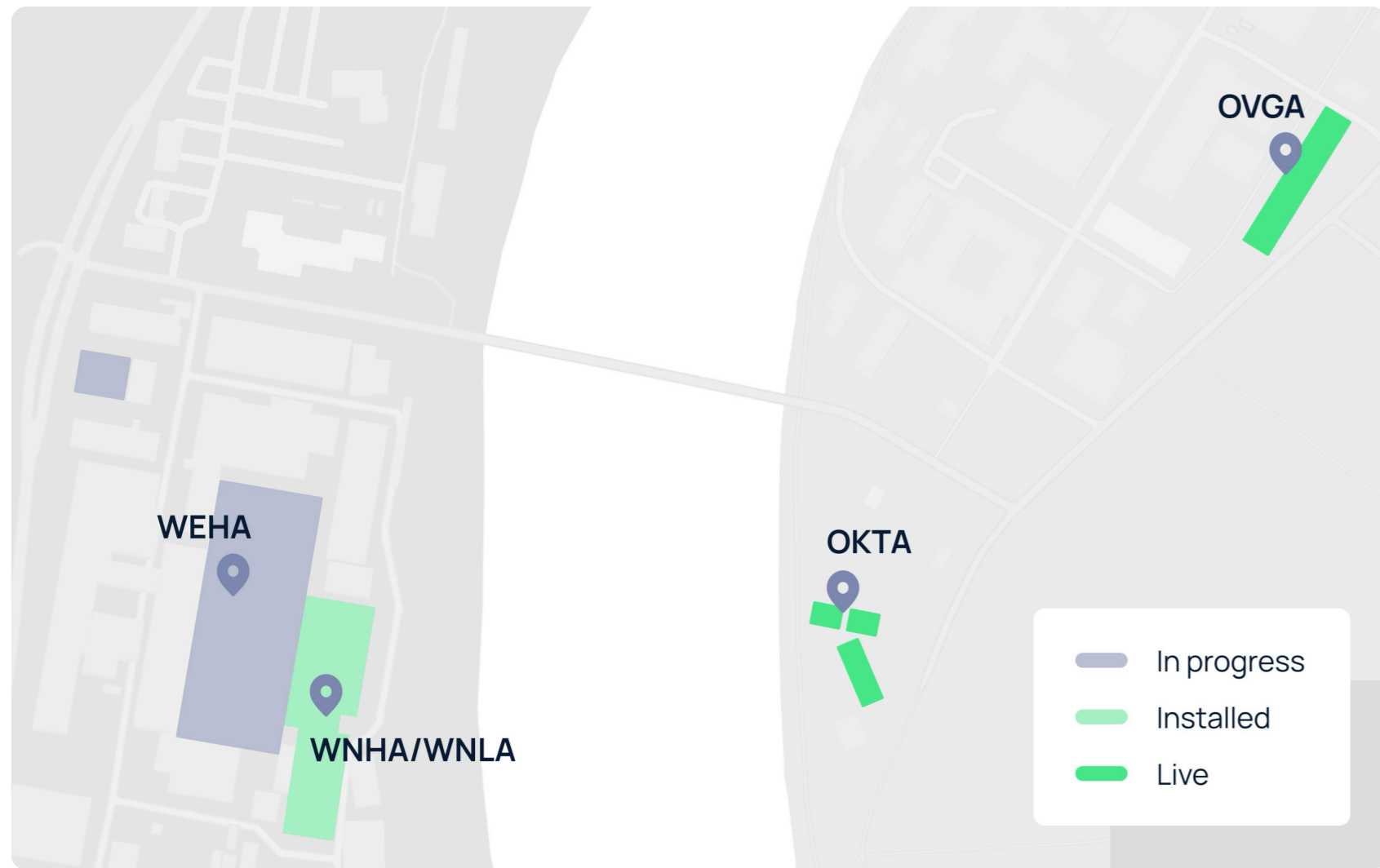


**1 MW / 2 MWh**  
BATTERY ENERGY STORAGE

**INTEGRATED ENERGY SYSTEM**

- ✓ Existing rooftop PV expanded with vertical PV fence and façade systems
- ✓ 175 kWp vertical PV fence added to the site perimeter
- ✓ 264 kWp PV façade turns building surfaces into active energy assets
- ✓ 1 MW / 2 MWh (BESS) battery stores surplus solar power for peak demand and grid constraints
- ✓ Energy management system optimizes production, storage and consumption in real time





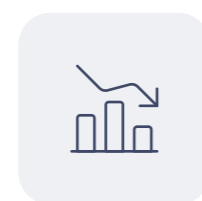
VILLIGEN, SWITZERLAND

# Paul Scherrer Institute

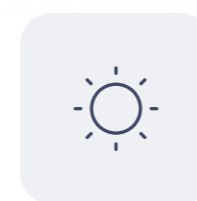
A multi-building rooftop PV project delivering renewable energy infrastructure for PSI.

Institutional

Photovoltaic System



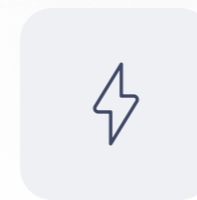
**149'300 kg**  
CO<sub>2</sub> REDUCTION P.A.



**1'500 kWp**  
INSTALLED SOLAR CAPACITY



**4**  
PV INSTALLATIONS COMPLETED



**2**  
PV SYSTEMS ALREADY IN OPERATION

## TECHNICAL PROJECT SCOPE

- ✓ Rooftop PV systems installed across multiple PSI buildings
- ✓ Four PV installations completed
- ✓ Two systems already in operation
- ✓ Final phase requires custom scaffolding

KLINGNAU, SWITZERLAND

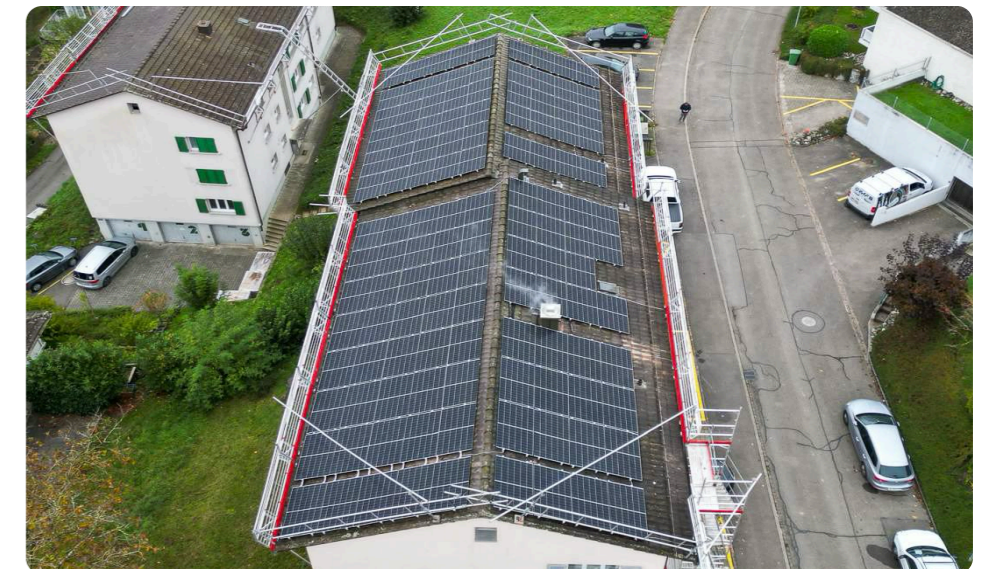
# Residential multi-family

An integrated rooftop PV and heat pump upgrade modernizing two multi-family houses with lower-emission, lower-cost energy.

 Portfolio

 Photovoltaic system

 Heating system



**69'459 kg**

CO<sub>2</sub> REDUCTION P.A.



**96 kWp**

INSTALLED SOLAR  
CAPACITY



**23 kW**

INSTALLED HEATING  
CAPACITY



**2**

MULTI-FAMILY  
HOMES

✓ Rooftop PV, three air-to-water heat pumps and renewed infrastructure work together to improve efficiency, comfort and long-term value.



# Thank you

Want to learn more?



## OFFICES

Switzerland, France,  
Germany, Austria, Italy

## CONTACT

hello@enshift.com  
enshift.com

## DÉCOUVREZ

 [@enshift AG](#)  
 [@enshift AG](#)

